

MOBILE ORDERING

Printer pairing instructions

RETAIL TECHNOLOGY + PAYMENTS

How to pair the Bluetooth Printer to an Apple iOS mobile device in 6 easy steps

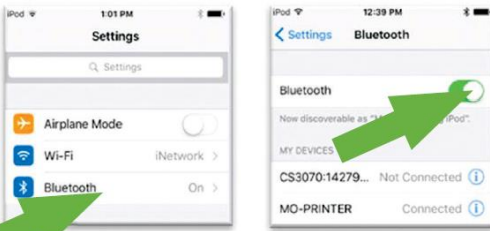
1

Turn on the printer by pressing the green button on the front face of the unit.



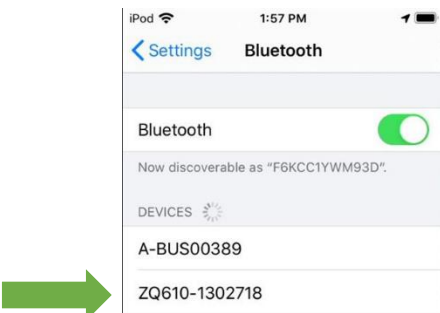
2

On your Apple device, open the Settings app and enable Bluetooth.



3

Tap the device listed on screen as "ZQ610-XXXXXXX" (x's = last 7 of the printers serial #.).



4

On the printer, "BT PAIRING EVENT" will display on the screen. Press the button underneath the word "ACCEPT"



5

The same pairing code should be displayed on the Apple device. Select "Pair" to complete the process.



6

When finished, "MO-PRINTER" will show a status of "connected". Open the Mobile Ordering app to print tags.



NOTE: With each new printer installation, six rolls of yellow retail shelf labels will be included for a cost of \$18.00 + tax.

To order labels:

Email: RetailTechOperations@unfi.com (invoices to store)

Or

Visit <http://iunfi.myshopify.com/> (charged to your credit card)

Available Colors: Yellow, Orange, Blue, Brown, Red, Green

